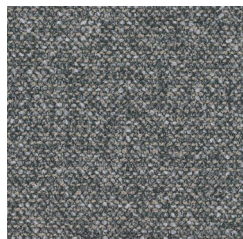




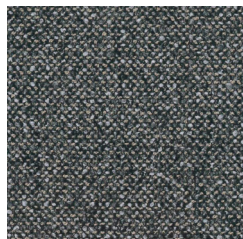
Verellen

CONTRACT

DANDI



Elephant



Zinc

CHARACTERISTICS

Content: 81% Polyester, 19% Cotton

Width: 55" (140cm)

Cleaning: Dry Clean

Finish: Crypton

Grade: EL2

PERFORMANCE

Flammability: UFAC | NFPA 260 | Class 1

CAL TB 117 - 2013
BS 5852 Source 0

Abrasion: 100,000 DR Martindale

200,000 DR Wyzenbeek